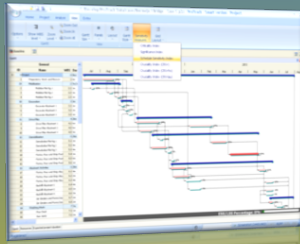


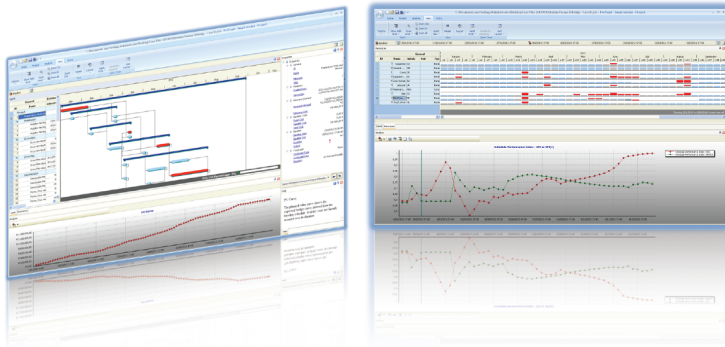
# ProTrack 3.0



- Dynamic scheduling on your desktop
- Online integration with PM knowledge Center
- New online support and help center
- Used in academia and business
- Smartest version • Lowest price

**ProTrack 3.0** is a complete redesigned version of the smart version of ProTrack 2.0. Its integration with PM Knowledge Center ([www.pmknowledgecenter.com](http://www.pmknowledgecenter.com)) and its strong focus on the integration of baseline scheduling, risk analysis and project control makes it yet a stronger learning tool to stimulate interaction between researchers, students and practitioners in the field of project management and dynamic scheduling. Go to [www.protrack.be](http://www.protrack.be), buy, interact and... enjoy!

## DYNAMIC SCHEDULING

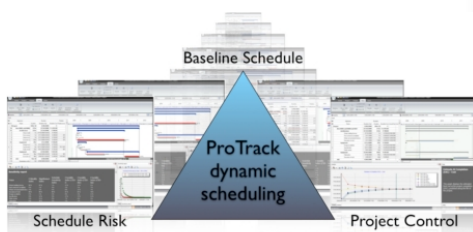


Dynamic scheduling is used to refer to three dimensions of project management and scheduling:

- Baseline Scheduling: Critical Path and Resource scheduling
- Risk Analysis: Schedule Risk Analysis and Monte-Carlo simulations
- Project Control: Earned Value Management and Earned Schedule control

## ONLINE INTEGRATION

**PM Knowledge Center** brings relevant articles and references on dynamic scheduling together at one place! ProTrack's **help and support center** allows the user to interact with the OR-AS team for useful suggestions and comments, to report problems and to propose and share future developments ideas.



## PRICING

### ProTrack 2.0

- Basic Version: € 299
- Sensitivity Scan: € 399
- Time Shuttle: € 399
- Smart Version: € 599

€ 599

### ProTrack 3.0

- Only the Smart Version at the lowest price!
- Full free integration with PM Knowledge Center

€ 299